

N. T.

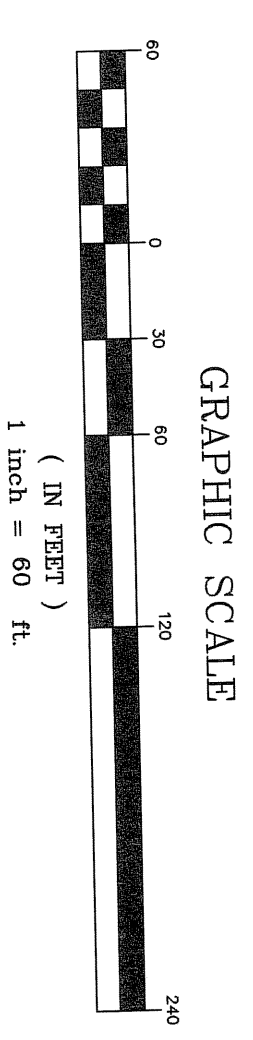
1. PLAT OF TRACT 1 FOR W.C. VARN AND RAYMOND A. KNIGHT JR. LOCATED IN 1<sup>ST</sup> ST. JOHNS PARISH, MONROE CORNER, BERKELEY COUNTY, SOUTH CAROLINA BY HAGER METTS S.C.R.L.S. NUMBER 4183 DATED AUGUST 11, 1989 AND RECORDED IN PLAT CABINET E PAGE 507.
2. PLAT OF TRACT 2 FOR W.C. VARN AND RAYMOND A. KNIGHT JR. LOCATED IN 1<sup>ST</sup> ST. JOHNS PARISH, MONROE CORNER, BERKELEY COUNTY, SOUTH CAROLINA BY HAGER METTS S.C.R.L.S. NUMBER 4183 DATED AUGUST 11, 1989 AND RECORDED IN PLAT CABINET E PAGE 508.
3. PLAT OF TRACT 3 FOR RAYMOND A. KNIGHT JR. LOCATED IN 1<sup>ST</sup> ST. JOHNS PARISH, MONROE CORNER, BERKELEY COUNTY, SOUTH CAROLINA BY HAGER METTS S.C.R.L.S. NUMBER 4183 DATED AUGUST 11, 1989 AND RECORDED IN PLAT CABINET E PAGE 507.
4. PLAT OF 0.89 ACRES FOR LAND ASSOCIATES LOCATED IN 1<sup>ST</sup> ST. JOHNS PARISH, MONROE CORNER, BERKELEY COUNTY, SOUTH CAROLINA BY HAGER METTS S.C.R.L.S. NUMBER 4183 DATED MARCH 8, 1989 AND RECORDED IN PLAT CABINET B PAGE 86.
5. PLAT OF 0.92 ACRES FOR LAND ASSOCIATES A PARTNERSHIP LOCATED IN MONROE CORNER, BERKELEY COUNTY, SOUTH CAROLINA BY JAMES E. SHULER S.C.R.L.S. NUMBER 3014 DATED OCTOBER 28, 1982 AND RECORDED IN PLAT CABINET E PAGE 71.
6. PLAT OF LOT CONTAINING 0.37 ACRES FOR LAND ASSOCIATES LOCATED IN 1<sup>ST</sup> ST. JOHNS PARISH, MONROE CORNER, BERKELEY COUNTY, SOUTH CAROLINA BY HAGER METTS S.C.R.L.S. NUMBER 4183 DATED JUNE 28, 1982 AND RECORDED IN PLAT CABINET E PAGE 28.
7. PLAT OF TWO LOTS BEING COMBINED INTO 0.794 ACRES LOT FOR P. ARLETTE ADDIE INC. LOCATED IN MONROE CORNER, BERKELEY COUNTY, SOUTH CAROLINA BY H. NIELSON JR. S.C.R.L.S. NUMBER 7023 DATED NOVEMBER 2, 1982 AND RECORDED IN PLAT CABINET E PAGE 44.
8. PLAT OF CHINA BARON SECTION TWO LOCATED IN MONROE CORNER, BERKELEY COUNTY, SOUTH CAROLINA BY E.A. DENNIS S.C.R.L.S. NUMBER 850 DATED JULY 20, 1965 AND RECORDED IN PLAT BOOK PAGE 45.
9. PLAT OF 1<sup>ST</sup> ST. JOHNS SUBDIVISION LOCATED IN MONROE CORNER, BERKELEY COUNTY, SOUTH CAROLINA BY W.E. GILBERT S.C.R.L.S. NUMBER 4387 DATED JULY 16, 1975 AND RECORDED IN PLAT V PAGE 199.
10. PLAT OF TRACT 4 SHOWING 13.1 ACRES WITH EXISTING EASEMENTS FOR W.C. VARN AND RAYMOND A. KNIGHT JR. LOCATED IN 1<sup>ST</sup> ST. JOHNS PARISH, MONROE CORNER, BERKELEY COUNTY, SOUTH CAROLINA BY HAGER METTS S.C.R.L.S. NUMBER 4183 DATED AUGUST 29, 1987 AND RECORDED IN PLAT CABINET E PAGE 482A.
11. PLAT OF 18.84 ACRES BELONGING TO JOHN BLANCHETT, LOCATED IN MONROE CORNER, BERKELEY COUNTY, SOUTH CAROLINA BY W.E. GILBERT S.C.R.L.S. NUMBER 4387 DATED JULY 12, 1975 AND RECORDED IN PLAT BOOK PAGE 81.
12. PLAT OF A PORTION OF GIPSY PLANTATION CONTAINING 80.0 ACRES FOR 1<sup>ST</sup> ST. JOHNS PARISH, MONROE CORNER, BERKELEY COUNTY, SOUTH CAROLINA BY W.C. VARN AND RAYMOND A. KNIGHT JR. LOCATED IN 1<sup>ST</sup> ST. JOHNS PARISH, MONROE CORNER, BERKELEY COUNTY, SOUTH CAROLINA BY CHARLES COLLINS S.C.R.L.S. NUMBER 247 DATED JANUARY 20, 1970 AND RECORDED IN PLAT BOOK A PAGE 198.

# PLAT OF TRACT 4

PROPERTY OF MARTIN HENRY INVESTMENTS INC., LOCATED IN MONCKS CORNER, BERKELEY COUNTY, SOUTH CAROLINA.

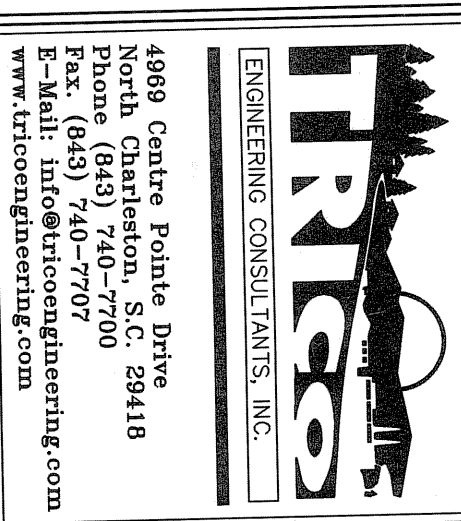
DATE: SEPTEMBER 15, 2006

SCALE: 1" = 60'



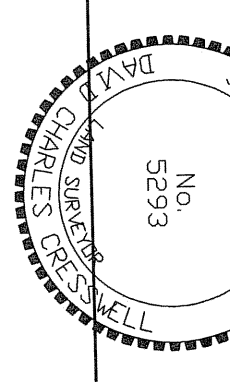
GRAPHIC SCALE

( IN FEET )  
1 inch = 60 ft.

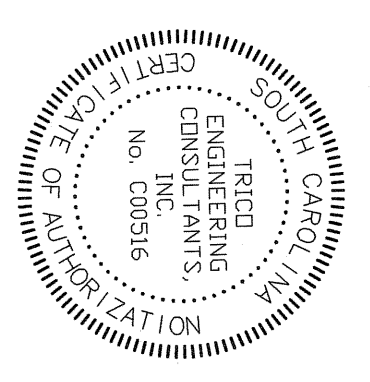


I HEREBY STATE TO THE BEST OF MY KNOWLEDGE, INFORMATION AND BELIEF, THE SURVEY SHOWN HEREON WAS MADE IN ACCORDANCE WITH THE REQUIREMENTS OF THE MINIMUM STANDARDS MANUAL FOR THE PRACTICE OF LAND SURVEYING IN SOUTH CAROLINA, AND MEETS OR EXCEEDS THE REQUIREMENTS FOR A CLASS A SURVEY AS SPECIFIED THEREIN.

DAVID C. CRESSWELL



P.L.S. 5293



The subdivision plat shown hereon has been found to comply with the Town of Moncks Corner Land Development Regulations and has been approved for recording on The Office of the Registrar of Deeds for Berkeley County, South Carolina.

Date 10/23/16 Val J. Lumbert  
 Administrative Official

Administrative Official